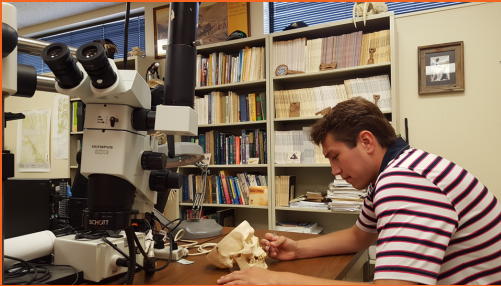


Native American Primary Care Center of Excellence



Pathways into STEMM Careers for Native Americans

Native Explorers STEMM Summer Internship: Participants in the Science, Technology, Engineering, Mathematics, and Medicine (STEMM) summer internship will work with OSUCHS faculty, medical and graduate students who are Native American and located at the Tulsa and/or Tahlequah campuses to gain hands-on experiences in research (bench or clinical trials) and learn about clinical anatomy with cadaveric specimens. Students may also participate in field work that involves paleontological and archaeological sites and shadow clinicians in tribal hospitals and clinics. The participant will be selected through a competitive application process established by a selections committee consisting of the COE program leadership. *Program activities (8 weeks) will occur during the months of June and July.*

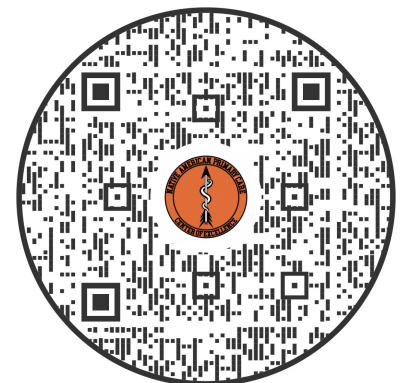
Program Requirements:

- Must be at least 18 years old and be an enrolled member of a federally recognized tribe
- Interested in graduate or professional programs in STEMM
- Interested in traditional ways and culture

Program Offers:

- Stipends
- Research training
- Clinical opportunities
- Cultural experiences
- Networking with OSUCHS administrators, faculty, students, and admissions
- Free to all participants

APPLICATIONS DUE February 1, 2024 BY 5:00 PM



CONTACT US // Kent Smith, Ph.D.
Associate Dean and Professor of Anatomy
kent.smith@okstate.edu

Tonya Wapskineh, MPH
Director, Native American Primary Care Center of Excellence
tonya.wapskineh@okstate.edu



**CENTER FOR
HEALTH SCIENCES**