

OKLAHOMA STATE UNIVERSITY



# COLLEGE OF OSTEOPATHIC MEDICINE



**MEDICINE**



Medical students Andrew Tran (left), Alex Baldrige and McKenna Riggs practice inserting chest tubes with help from Dr. Amanda Cain (right) in the Clinical Skills Lab at OSU Center for Health Sciences in Tulsa.

“

We say it a lot, but OSU College of Osteopathic Medicine is like a family. As faculty and administrators, we care about our students and the profession we are preparing them for. We want students who have that same passion for care and desire to make a difference in the lives of others.”

— **Dennis Blankenship**, DO, Class of 2002  
Dean, OSU College of Osteopathic Medicine  
Clinical Professor of Emergency Medicine



# Why OSU College of Osteopathic Medicine?

For over 50 years, Oklahoma State University College of Osteopathic Medicine has been educating and training doctors who are caring for their patients in every corner of Oklahoma and across the country. Our graduates are joining the growing number of osteopathic physicians who are excelling in primary care and every specialty including dermatology, cardiology, neurology and orthopedic surgery.

During your first year of medical school, you will be welcomed by your Cowboy family. A second-year medical student with similar interests and goals will be paired with you to answer your questions, and offer guidance. A faculty advisor will offer study strategies and provide additional support.

More than 4,000 students have graduated from OSU-COM and are now practicing medicine in the United States along with almost 135,000 Doctors of Osteopathic Medicine, or DOs. More than 25 percent of all current medical students are attending an osteopathic medical school.

There are more than 168,700 DOs and osteopathic medical students in the United States, an 80 percent increase in the last 10 years.

Now, your credit hours from OSU-COM can earn you a master's degree in Medical Sciences. Upon completion of degree requirements at OSU-COM, you will receive both a Doctor of Osteopathic Medicine degree and a Master of Science degree when you graduate.

*You don't need to apply separately or pay additional tuition and fees. You will be automatically enrolled unless you choose to opt out. This opportunity allows you to maximize your academic journey and expand your qualifications.*



## CONTENTS

- 4 Be Part of the Cowboy Family
- 7 Same Quality Education on Two Campuses
- 10 Advanced Technology
- 12 The DO Difference
- 15 Innovative Curriculum
- 16 Elective Medical Tracks
- 19 Where You Matter
- 21 Medical Student Research
- 22 Residency Matches
- 24 Student Life and Wellness
- 26 Admission Requirements
- 28 Admission Options
- 30 Financial Aid

# BE PART OF THE COWBOY FAMILY







“

My passion for addressing many health inequities that impact historically marginalized communities has driven my work and commitment to medicine. Over the past few years, OSU-COM has provided me with excellent academic preparation, fostering both professional and personal growth to further my commitment to health justice. Receiving the 2024 National Student DO of the Year award as the first student from OSU-COM, was an incredible honor. It would not have been possible without the mentorship and support I have received from peers, faculty and staff.”

— **Paul Delgado**, OSU-COM student, Class of 2025  
2024 National Student DO of the Year



# SAME QUALITY EDUCATION ON TWO CAMPUSES

## **Tulsa is the second-largest city in Oklahoma.**

Oklahoma State University College of Osteopathic Medicine educates and trains osteopathic physicians in a wide range of specialties with an emphasis on serving rural and underserved Oklahoma.

During the first and second year of medical school, lectures and labs are taught in person and recorded for students to learn at their own pace. Regardless of the campus you are admitted to, you will have access to the same resources, clinical faculty and staff, and education to prepare you for your career in medicine.

The hub of our medical school is the A.R. and Marylouise Tandy Medical Academic Building with lecture halls, learning labs, classrooms, clinical skills exam rooms and a hospital simulation center. North Hall, right next door, is the newest building on campus and has one of the most advanced anatomy labs in the region as well as a dedicated lab for neuroanatomy for second-year students.

**OSU-COM student Paul Delgado was recognized as the 2024 National Student DO of the Year by the American Association of Colleges of Osteopathic Medicine, the first OSU student to receive the honor.**

OSU-COM is just minutes from bustling downtown Tulsa with unique and local shops and restaurants; venues for concerts, sports and performing arts; parks and green spaces that host community events throughout the year.

River Parks, just minutes from campus, is comprised of 26 miles of paved walking and bike trails along the Arkansas River and Zink Lake with playgrounds, fountains and sculptures. Also along the river is the Gathering Place, voted one of America's top parks and attractions with multiple playgrounds, water features, eateries, and green spaces. Not far from there is Turkey Mountain Urban Wilderness with 45 miles of dirt trails for hiking, mountain biking and trail running.

Tulsa is known for its Art Deco architecture dating back to when Tulsa became known as the "Oil Capital of the World" in the early 1900s. It's also home to world class museums including the Philbrook Museum of Art, Gilcrease Museum and Greenwood Rising Black Wall Street History Center, as well as family-friendly attractions like the Tulsa Zoo, Oklahoma Aquarium and Tulsa Botanic Gardens. Catch a Tulsa Driller's baseball game, FC Tulsa soccer match, Tulsa Oilers hockey game, or the newest sports franchise in town, the Tulsa Oilers indoor football team.



“ At OSU College of Osteopathic Medicine, and particularly here at our Cherokee Nation campus, many of our students are interested in practicing in rural or underserved communities. It’s a learning environment that promotes students to pursue their passions to serve patients who need access to patient-centered care. OSU encourages us to do our best, and it pulls the best out of us.”

— **Natasha N. Bray**, DO MEd, Class of 2003  
Dean, OSU College of Osteopathic Medicine  
at the Cherokee Nation  
Associate Dean of Accreditation  
Clinical Professor Rural Health



## Tahlequah was named one of the top 100 Best Small Towns in America.

The OSU College of Osteopathic Medicine at the Cherokee Nation in Tahlequah, Oklahoma, is the country's first tribally affiliated medical school.

In addition to lecture halls, classrooms and lab spaces, students also learn using advanced technology in the hospital simulation center and clinical skills lab. Students on the Tahlequah campus enjoy smaller class sizes, more personalized learning, and cultural engagement with the Cherokee Nation and other tribal partners.

## The 2022 and 2023 OSU Student Doctor of the Year were both students at the Cherokee Nation campus.

The school is on the same campus as the W.W. Hastings Hospital and the Cherokee Nation Outpatient Health Center, where students have the opportunity for hands-on training and experience. Just yards away, construction has also started on a new Hospital.

Tahlequah is the capitol of the Cherokee Nation, the second largest American Indian tribe in the country. You can visit the Cherokee National History Museum housed in the original Cherokee National Capitol. Cherokee National Holiday is held over Labor Day weekend every year.

The Illinois River in Tahlequah is ideal for canoeing, kayaking or floating with friends. You can also fish or camp along the river or at two state parks in the Tahlequah area, Cherokee Landing and Tenkiller State Park. There are also plenty of scenic hiking trails around Tahlequah including Tenkiller State Park, J.T. Nickles Preserve and Sparrow Hawk Primitive Area.

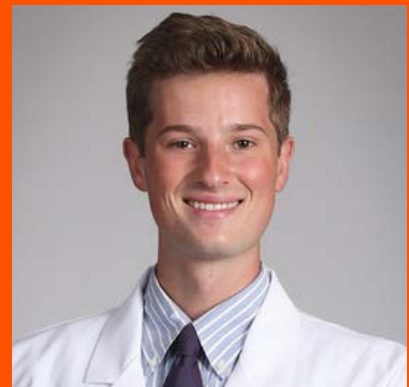
Construction is underway on the \$10 million Wilma P. Mankiller Capitol Park, named after the late Cherokee Nation principal chief, and should be completed in fall 2025. The 15-acre park will feature a community building, dog park, heirloom garden, amphitheater, stickball field, playground, walking trails, food truck area and a memorial statue of Mankiller.

Our students take part in a wide range of community service and engagement opportunities, and the Tahlequah and Cherokee Nation communities in turn support them through donated resources, events and more.



I feel extremely supported by the faculty and staff at the Cherokee Nation campus. I rely on countless advisors, including Dr. Bray, the campus dean, for advice or general support. The faculty and administration encourage student feedback to implement changes, reassuring me that they are looking out our best interests. The students know everyone on campus, including staff and faculty. The campus culture has helped me become a more extroverted and involved student personally and as a medical student. I love it!"

— **Itzel Bernier**, Class of 2027  
OSU-COM at Cherokee Nation



I love being a medical student at the Cherokee Nation campus because the small class treats each other like a family. We are all in it together, and you can really feel that. What I love about Tahlequah is the enthusiasm the citizens of the town have that we are here, and of course, if you love nature, you're in the right place."

— **Jack Gaydos**, Class of 2027  
OSU-COM at Cherokee Nation

# ADVANCED TECHNOLOGY





At OSU-COM, students learn and train in innovative facilities. The Tulsa and Tahlequah campuses house world-class hospital simulation centers and patient-centered clinical skills centers, which enable students to practice essential skills, procedures and critical care training on high fidelity manikins and human patient actors.

OSU-COM also has a number of procedural simulators including a laparoscopic surgical simulator, ultrasound simulator, GI bronchial simulator and orthopedics simulator, providing the most up-to-date medical training to students.

### Hospital Simulation Centers

OSU-COM's hospital simulation centers provide innovative, hands-on learning environments. Exemplifying the adage "practice makes perfect," these facilities enable students to gain clinical experience in a wide variety of medical scenarios, while also receiving feedback and evaluations to hone their clinical skills.

Highly realistic scenarios are created in a safe environment with eight simulation suites configured to match the conditions of a birthing room, operating room, emergency room or intensive care unit. Students have the opportunity to work on high fidelity manikins to learn innovative clinical techniques without fear of harming the patient.

### Patient-Centered and Student-Focused Training

There are 18 clinical exam rooms on the Tulsa campus and 10 rooms in the Tahlequah facility. Students interact with standardized patients — actors playing the role of patients — with different medical conditions. Students develop diagnostic skills and bedside manners needed for history-taking, physical examination, communication and relationship building.

## By the Numbers

08

Hospital Simulation Suites

28

Clinical Exam Rooms

28

High-Fidelity Manikins

01

Surgical Simulation Suite

01

Virtual Reality/  
Augmented Reality Lab

02

Clinical Skills Labs

01

Ambulance

# THE DO DIFFERENCE

The field of osteopathic medicine was founded on the philosophy that all body systems are interrelated and dependent on each other for optimal health. A Doctor of Osteopathic Medicine, or DO, embraces a holistic approach to medicine, focusing on preventative ways to attain and maintain wellness.

Another way DOs are unique from allopathic physicians, or MDs, is they receive additional training in the skill of osteopathic manipulative medicine, or OMM. This unique skill gives DOs an understanding of how an injury or illness in one part of the body can affect another, enabling them to use their hands to diagnose and treat patients in order to reduce the need for medications. By combining their OMM knowledge with the latest advances in medical technology,

osteopathic physicians offer their patients the most comprehensive, patient-centered, health-oriented care available.

OSU-COM offers students clinical experiences to practice their OMM techniques during their first week of school. OMM faculty consult with students on their assessments and treatment as well as discuss preventative care with patient models.

Students also gain additional experience practicing their OMM techniques on staff and faculty during a Tuesday noon clinic. First-year and second-year students are paired to practice their interpersonal skills by giving a comprehensive screening, practicing techniques then consulting with faculty for a grade and guidance.

**DOs are fully licensed physicians who recognize the interrelated unity among all systems of the body, each working with the other to promote overall health and wellness.**



## OSU-COM alums DOing great things



**Kayse Shrum, DO**  
Class of 1998

President of Oklahoma State University. She practiced pediatrics before returning to OSU College of Osteopathic Medicine to teach, then became dean of OSU-COM and president of OSU-CHS. She became president of the OSU system in 2021.



**Amanda Martin Padilla, DO**  
Class of 2004

Orthopaedic sports medicine surgeon at Elite Sports Medicine in Nashville, and the team physician of the USA National Women's Soccer Team. She's also a consultant and education committee chair for Major League Soccer.



**Chris McNeil, DO**  
Class of 2021

Founder and executive director of Youth Medical Mentorship, an organization that works to increase and sustain representation of underrepresented youth in medical and health professional career pipelines. McNeil, an emergency medicine resident with OSU Medicine, also serves on the Union Public Schools Board of Education in Tulsa.



“

The curriculum at OSU College of Osteopathic Medicine is constantly evolving to stay current and ensure readiness for licensure exams as well as the clinical experiences necessary for residency and beyond. The curriculum along with accessibility of faculty, the research opportunities and early clinical experiences are just some of the many facets that make OSU-COM unique among medical schools.”

— **Carrie Gilstrap, DO**  
Interim Dean of Curriculum and Academic Success  
and Clinical Professor of Medical Education



# INNOVATIVE CURRICULUM

Providing students with an exceptional medical education is our top priority. OSU-COM's four-year program emphasizes the integration of biomedical sciences with clinical systems and is designed to prepare medical students for all aspects of medicine. This enables them to enter any residency program in any specialty.

Our faculty are committed to excellence in teaching and are eager to share their experience and passion for osteopathic medicine with their students. We understand that students learn in different ways, so our curriculum incorporates traditional classroom lectures with laboratory sessions, small group and team-based learning. OSU-COM also offers individualized advisement

and counseling in career development, study strategies and academic skill development.

Our rigorous academic curriculum combined with our support services prepare students for success on national examinations and residency training.

After taking their first board exam, third- and fourth-year medical students are out of the classroom to start their rotations. OSU-COM has a wide array of required and elective clinical rotations in a variety of settings and specialties including emergency medicine, psychiatry and behavioral sciences and pediatrics.

For more, visit [okla.st/com-curriculum](https://okla.st/com-curriculum).

# 94%

**OSU-COM's average Level 1 pass rate for the past 2 years**

*Board Exam Performance*

	OSU-COM	National Average
2023-2024 Level 1 Pass Rate	97.0%	93.1%
2023-2024 Level 2CE Pass Rate	97.4%	92.6%
2023-2024 Level 2CE Mean	544.42	526.86

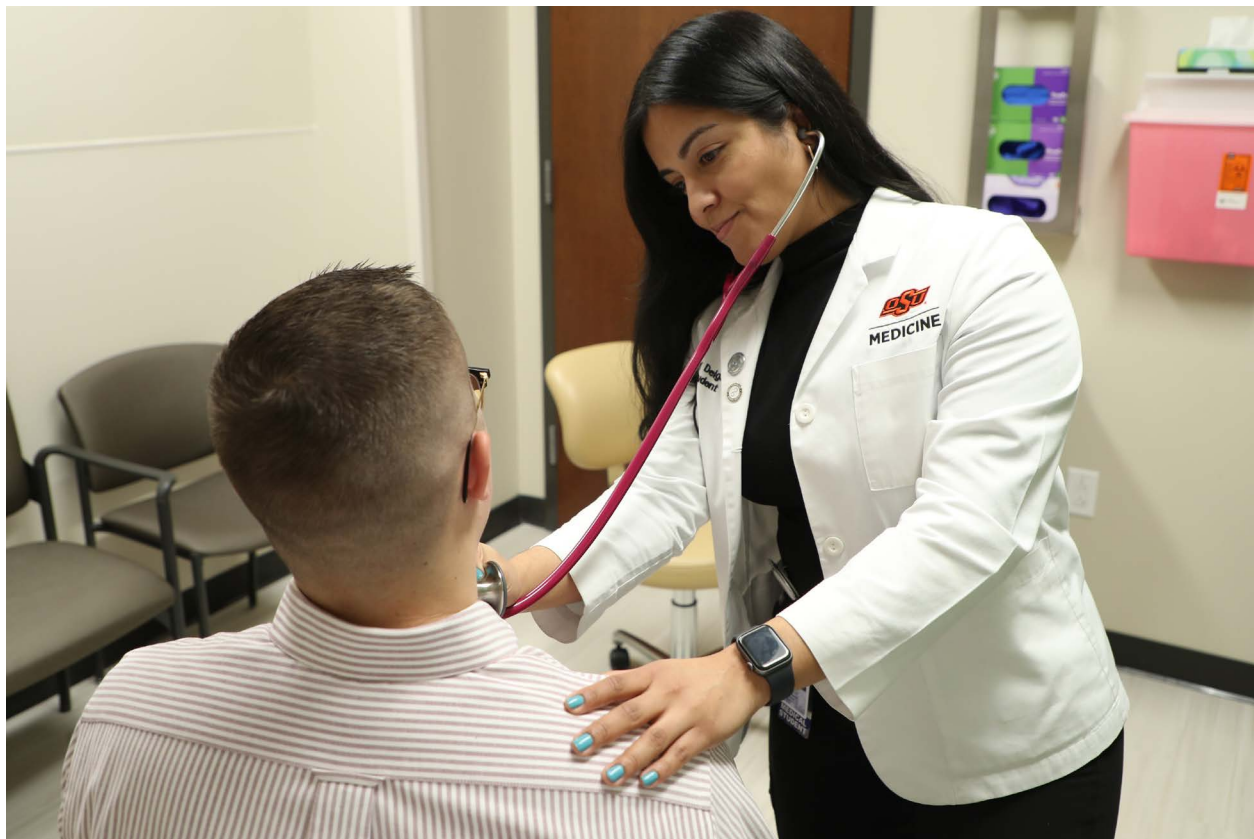
# ELECTIVE MEDICAL TRACKS

**OSU College  
of Osteopathic  
Medicine offers  
four medical  
education tracks.**

## **Rural Medical Track**

OSU-COM has a mission to produce primary care physicians for rural and underserved Oklahoma. That mission is critical as the state is challenged by continued shortages of primary care physicians. OSU-COM offers a dynamic Rural Medical Track with a specialized course of study that trains students to care for rural and underserved populations while developing skills that prepare them to be community leaders.

For more, visit [okla.st/ruralmedicaltrack](https://okla.st/ruralmedicaltrack).







## Tribal Medical Track

OSU-COM's mission aims to improve the primary care physician workforce shortages faced by tribal health care systems. To prepare doctors for a successful transition into tribal communities and health systems, we offer a Tribal Medical Track. The opening of OSU-COM at the Cherokee Nation provides unprecedented opportunities for students to train within the tribal health system. For medical students who are Native American or interested in tribal health care, the Tribal Medical Track creates a diverse pathway to serve tribal communities as primary care physicians.

For more, visit [okla.st/tribalmedicaltrack](https://okla.st/tribalmedicaltrack).

## Urban Underserved Medical Track

OSU College of Osteopathic Medicine's mission is also aimed to improve the primary care physician workforce shortages faced by urban and underserved health care systems across Oklahoma. To prepare doctors for a successful matriculation into urban underserved communities and health systems, OSU-COM offers a dynamic Urban Underserved Medical Track. For medical students who are interested in health disparities in urban areas it creates a pathway to serve urban underserved communities as primary care physicians.

For more, visit [okla.st/urbanunderservedmedicaltrack](https://okla.st/urbanunderservedmedicaltrack).

## Benefits

- The Office of Clinical Education works closely to develop personalized plans of study that match students' specific interests;
- Unique hands-on training and experience with physicians who understand the challenges and limited access to medical services in rural, urban and underserved communities and tribal health systems;
- Opportunities to experience and collaborate on innovative models of health care delivery such as telehealth and virtual medicine;
- Learn about indigenous health disparities among Native Americans and career opportunities in tribal health care; and
- Learn about racial, ethnic, socio-economic and gender health disparities and receive training to care for patients in a free clinic.

## Successful Students Are

- Mission-focused on serving rural, tribal and underserved communities;
- Work on research projects to address health care issues to implement positive change;
- Passionate about improving and treating health disparities in tribal, rural and underserved populations; and
- Interested in practicing family medicine, obstetrics and gynecology, emergency medicine, general surgery, psychiatry and behavioral health, internal medicine or pediatrics.





Medical student Adam Khan took part in the Global Health trip to Malawi in 2023.

## Global Health Track

The Global Health Track is offered to medical students interested in global health and international outreach. The curriculum is designed to provide students with an opportunity to explore issues in the delivery of health services in other countries, as well as a survey of issues related to global health care.

The Global Health Track is limited to 15 students per year. Students in the GHT can be enrolled in another health track.

For more, visit [okla.st/globalhealthtrack](https://okla.st/globalhealthtrack).

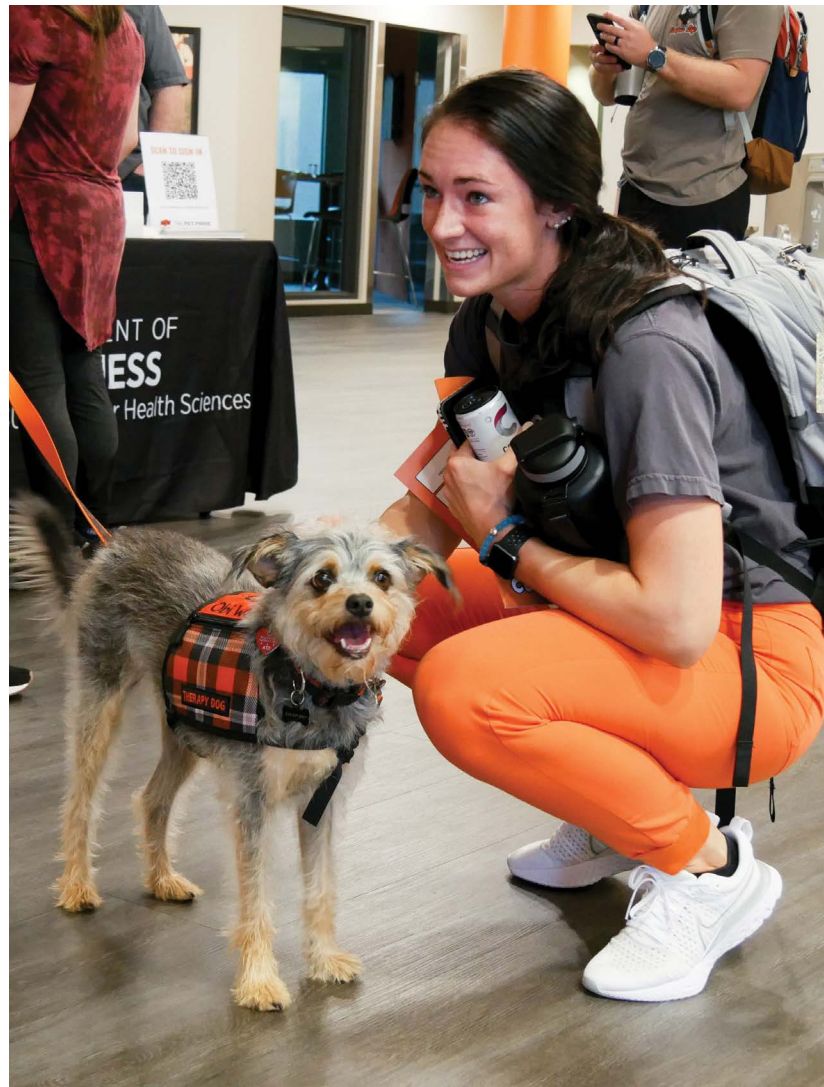


Students have the option to enroll in designated global health courses through the School of Health Care Administration to receive a Graduate Certificate in Global Health.

# WHERE YOU MATTER

At Oklahoma State University, who you are and where you come from matter. Providing a wide range of ways to understand and engage with the world, identifying opportunities and creating solutions are core to our mission as a land-grant university. We fulfill our mission and enrich our campus community by maintaining a welcoming and inclusive environment that appreciates, values and fosters a sense of belonging for all.

We embrace those with different and unique identities, characteristics, experiences and perspectives. We work so everyone has what they need to succeed by increasing access, resources and opportunities for all. We create a welcoming culture where differences are celebrated and everyone is valued, respected and able to reach their full potential.





In 2023, OSU medical students had

**170** **78** **57**

research poster presentations

articles, letters or papers published in

journals and publications including:

- International Journal of Osteopathic Medicine
- American Journal of Ophthalmology
- Orthopaedic Journal of Sports Medicine
- Journal of Cardiovascular Medicine
- Psychiatric Quarterly
- Journal of the American Academy of Orthopaedic Surgeons
- Journal of Osteopathic Medicine



I joined Dr. Vassar’s team at the last minute, and it is one of the best decisions I’ve made in medical school. I am now a more informed student and future physician. I recommend research to future students because it allows them to work closely with other medical students, be part of a team and network with past and present OSU-COM students. It is a valuable experience and easily accessible to students. Because of our research on data-sharing, another student doctor and I will be featured in the Journal of Bone and Joint Surgery, one of the top 10 impact journals in the United States.”

— **Klaire Wild**, OSU-COM Class of 2027



# MED STUDENT RESEARCH

Medical students at OSU-COM have several opportunities to carry out research including hypothesis-based research, clinical sciences or other scientific research opportunities. Many of our faculty support research efforts of our students whether it's developing an abstract, creating poster presentations, presenting at a conference or writing a paper.

The Office of Medical Student Research (OMSR) was established specifically so medical students interested in research can become familiar with the opportunities available on campus. Students develop investigation skills through the pursuit of new discoveries under the direction of a faculty research mentor.

OMSR hosts monthly lunch and learns where students learn about upcoming research opportunities and OSU Center for Health Sciences faculty discuss their research topics and areas of interest.

Students interested in research work are placed in labs or teams based on their areas of interest including those related to Adverse Childhood Experiences, substance use disorders and more. Findings and studies authored by students have been published in numerous journals and publications including the Journal of the American Medical Association and Oklahoma State Medical Proceedings among many others.

For more information, visit [okla.st/COM-research](http://okla.st/COM-research).

“Medical student research is crucial because it encourages inquiry and innovation in future physicians. Engaging in research allows students to contribute to the body of medical knowledge while applying scientific principles directly to clinical practice. This experience deepens their understanding of disease mechanisms, treatment approaches, and the importance of continuous learning. Additionally, it encourages collaboration between students, faculty, and the broader medical community, which is essential for driving progress in health care.”

— **Matt Vassar**, Director of the Office of Medical Student Research, Clinical Assistant Professor of Psychiatry and Behavioral Sciences

“I worked with Dr. Vassar's research team on three projects. Our results will help clinical researchers enhance their findings' validity, integrity, and generalizability to a broader population. I learned how to write and analyze scientific literature, identifying critical aspects of research papers. I learned that research extends beyond the lab and involves finding answers that impact the community and the research community.”

— **Eddy Bagaruka**, OSU-COM Class of 2027



# RESIDENCY MATCHES

OSU College of Osteopathic Medicine continues to strengthen its residency programs through important partnerships and invaluable legislative support.

OSU Center for Health Sciences offers 304 accredited residency and fellowship positions and the Osteopathic Medical Education Consortium of Oklahoma (OMEKO), staffed by the OSU-CHS Office of Graduate Medical Education, offers 206 accredited residency positions. In all, OSU and OMEKO offer 510 residency positions in clinics and hospitals across Oklahoma.

For the past eight years, OSU-COM has had an average 100 percent residency placement rate.

The OSU-CHS campus is located two miles away from the OSU Medical Center, one of the nation's

largest osteopathic teaching facilities and a pillar of the OSU Academic Medical District. In 2025, the new Veterans Hospital and Oklahoma Psychiatric Care Center will open in the medical district, adjacent to the OSU Medical Center, creating an additional 100 residency slots.

Unique within the OSU residency system are sponsored programs with tribal nation medical facilities in Oklahoma including the Cherokee Nation, Chickasaw Nation and Choctaw Nation.

In Tahlequah just yards away from the OSU-COM at the Cherokee Nation campus, construction is underway on a new 400,000 square foot Cherokee Nation hospital that will connect to the Cherokee Nation Outpatient Health Center, which opened in 2019. The new facilities also allow for an expanded residency program with the Cherokee Nation.



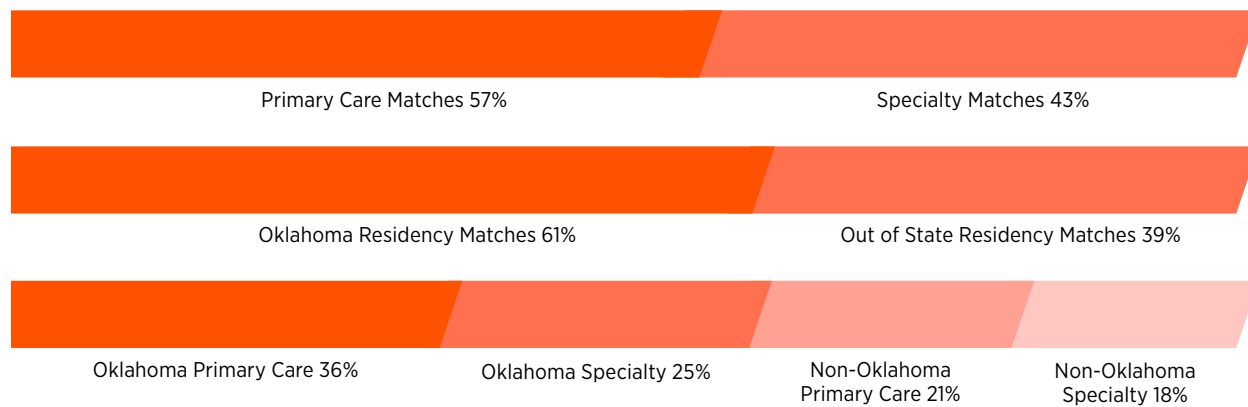
We have the mission and the vision to produce outstanding physicians with a focus on rural and underserved Oklahoma. We do that by offering residency programs that have their roots in those areas. We know that residents have a tendency to stay within 100 miles of the places they're graduating from, so if you have residency training programs in those areas, those individuals become committed to that community, they become committed to the patients they serve and they want to stay."

— **Mousumi Som, DO**  
Designated Institutional Official for OSU-CHS and  
OMEKO Residency Programs





## Residency Matches for Class of 2024



## OSU Residency and Fellowship Programs (number of residency/fellowship slots)

- |                            |  |                           |
|----------------------------|--|---------------------------|
| Addiction Medicine (2)     | Gastroenterology (9)                             | Otolaryngology/ENT (10)   |
| Anesthesiology (12)        | Internal Medicine (88)                           | Pediatrics (38)           |
| Cardiovascular Disease (6) | Interventional Cardiology (3)                    | Psychiatry (64)           |
| Emergency Medicine (70)    | OBGYN (24)                                       | Radiology Diagnostic (13) |
| Family Medicine (136)      | Orthopedic Surgery (15)                          | Surgery (15)              |
| Forensic Psychiatry (2)    | Osteopathic<br>Neuromusculoskeletal Medicine (3) |                           |

# STUDENT LIFE

## We are dedicated to creating a culture of wellness.

Although course work and studying are important when attending medical school, they aren't the full student experience at OSU-COM. There are plenty of co-curricular and extra-curricular activities outside the classroom.

OSU Center for Health Sciences has more than 50 student clubs and organizations on campus including national organizations, service-based clubs and medical interest groups in specialties such as Student Osteopathic Internal Medicine Association, OSU Pediatrics Club, Sports Medicine Club, Oklahoma Osteopathic Obstetrics and Gynecology Student Association, American College of Osteopathic Emergency Physicians, and many more.

There are also culture-based student organizations including Native American Students in Osteopathic Medicine, Latino Medical Student Association, Student National Medical Association,

American Medical Women's Association, American Muslim Medical Student Association and Asian Pacific American Medical Student Association.

We are also dedicated to creating a culture of wellness that enables students to achieve and maintain physical, mental and emotional health. Our Wellness Center offers fitness courses, meditation classes and a variety of lunch and learns that focus on healthy eating and overall wellness.

The Student Government Association strives to serve all students at OSU Center for Health Sciences and OSU-COM at the Cherokee Nation by representing students' opinions, addressing different campus needs through targeted programs and providing opportunities for leadership development. SGA partners with faculty, staff and the student body to ensure the institution is constantly improving.



The Office of Student Life and Department of Wellness are always working to improve the student experience. We have platforms for students to become actively engaged in their own learning outcomes. Students provide meaningful feedback through the Student Government Association, class officers and student organizations while our staff work directly with student leaders to improve or build any new programs and services. Student engagement and input are a vital part of the student experience.”

— **Angela Bacon**, EdS, MS  
Assistant Dean of Campus Life and Wellness







Health and wellness are essential to academic performance. Stress management, physical activity, nutrition, and sleep are all correlated with academic success. Our programs and services are meant to educate students on this information and provide an environment that supports health decisions. We know that school is a taxing process both mentally and physically. Our department offers a number of resources and services that allow students the opportunity to prioritize their own health and well-being. From free primary care and counseling services to campus recreation and health promotion activities, the Department of Wellness has you covered.”

— **Jesse Chaffin**, DHA, MPH, CHES  
Health and Wellness Manager



# ADMISSION REQUIREMENTS

Applying to medical school is a daunting and competitive process. In addition to excellent academic performance, applicants must possess personal qualities of character, aptitude, integrity and commitment to serving others. Extracurricular accomplishments are also considered.

At the time of application, applicants must have a cumulative GPA of at least a 3.0 and pre-professional science GPA of at least a 2.75 and minimum of a 492 MCAT score. Competitive applicants will have higher academic metrics.

Applicants must have completed the following courses with a C or above (2.0 on a 4.0 scale):

- English (2 semesters)
- Biology (2 semesters, including laboratory)
- Physics (2 semesters)
- General Chemistry (2 semesters)
- Organic Chemistry (2 semesters)
- At least one upper division science course with 3-5 preferred



## How to Apply

- Take the Medical College Admission Test (MCAT)
- Submit the AACOMAS Application (American Association of Colleges of Osteopathic Medicine Application System)
- Submit the OSU College of Osteopathic Medicine Supplemental Application
- Submit letters of recommendation
- If invited, participate in an on-campus interview

For more information visit [okla.st/osucomadmissions](http://okla.st/osucomadmissions).



## Doctor of Osteopathic Medicine (DO) / Master of Science (MS)

First-year medical students are now eligible to earn a new Master of Science in Medical Sciences (MS-MSCI) degree after completing their second year of medical school. Students enroll in a two-credit hour Capstone Experience course to explore a medical or health care topic and write a brief paper summarizing their research.

The 32-credit-hour degree is a non-thesis, coursework-based interdisciplinary graduate program. It is comprised of courses from the School of Biomedical Sciences, which DO students already take as part of their professional degree program, allowing students to earn a MS degree in addition to a DO degree.

## Dual Degree Options

All medical students will be dually-enrolled in the Graduate College and transfer 30 credit hours to cross-listed courses allowing them to earn a DO and MS degree upon graduation. The following dual degrees are offered.

### DO, MS/MBA

Master of Business Administration

### DO, MS/MS

Master of Science in Biomedical Sciences or  
Master of Science in Health Care Administration

### DO, MS/MPH

Master of Public Health

### DO, MS/PhD

Doctor of Philosophy in Biomedical Sciences

# ADMISSION OPTIONS

**Find the right path that works for you.**

## **Freshman to Physician in 7 Years 3+1 Med Bound Program — OSU**

Full-time students attending Oklahoma State University can apply to OSU-COM during the fall semester of their freshmen year. Students must be enrolled in an approved major and meet eligibility requirements to apply. Applications are due by October 1. To apply, contact [osucocomrecruitment@okstate.edu](mailto:osucocomrecruitment@okstate.edu).

## **ROTC Med Bound Program — OSU**

Full-time students attending Oklahoma State University can apply to OSU-COM during the fall semester of their freshmen year. Applicants must be active in the Reserve Officers' Training Corps (ROTC). Applications are due by October 1. To apply, contact [osucocomrecruitment@okstate.edu](mailto:osucocomrecruitment@okstate.edu).

## **3+1 Program — Partner Universities**

Students spend their first three years of undergraduate studies at a partner university and matriculate to OSU College of Osteopathic Medicine after completing their junior year. After the first year of medical school, students apply for graduation at their undergraduate institution to be awarded their bachelor's degree. Students apply by September 1 of their junior year.

## **DO You Qualify for a Guaranteed Interview?**

The Guaranteed Interview Program provides prospective students from partner universities with a clear path to earn an interview with OSU-COM. Prospective students who meet the admission requirements will be invited to interview with the admissions committee at OSU-COM. Apply in your senior year or six months after graduation.

## **Graduate Certificate in Medical Sciences Program**

Several programs, including the Bridge, Guaranteed Admission, and At-Large, are available for OSU-COM admission consideration.

The program is designed to provide a foundation in biomedical sciences that helps aspiring medical students improve their grade point average or MCAT score before applying for medical school. The certificate program includes courses that mirror content areas of curriculum in the first two years of medical school.



For more information, visit  
[okla.st/com-admission-options](http://okla.st/com-admission-options).



## Application Cycle for Fall 2025

APPLICATION STEPS	MAY	JUNE	JULY	AUG	SEPT	OCT	NOV	DEC	JAN	FEB	MAR	APR
<b>AACOMAS application opens</b>	✓											
<b>OSU Secondary/ Supplementary Application</b>		✓										
<b>Interview Season Starts</b> (rolling admissions)				[Grey bar spanning from August to April]								
<b>Last month MCAT is offered in 2024</b>					✓							
<b>Last month to take the MCAT for 2025 cycle for OSU-COM</b>									✓			
<b>Release Your January MCAT scores</b> (if applicable)										✓		
<b>AACOMAS Application</b> Submit by February 28, 2025 at 11:00 p.m. (cst)										✓		
<b>Secondary/Supplemental App</b> Submit by March 30, 2025 at 11:00 p.m. (cst)											✓	
<b>Letters of Recommendation</b> Submit by March 30, 2025 at 11:00 p.m. (cst)											✓	

# FINANCIAL AID

OSU-COM offers top-notch medical education at an affordable price. For in-state students, tuition and fees are significantly less than those charged by private medical schools.

For the third straight year, Oklahoma State University will keep tuition and mandatory fees flat, marking five out for the last six years without increases for the university.

We also offer admitted students with permanent residency in Arkansas, Kansas and Missouri an out-of-state tuition waiver to defray the costs associated with the out-of-state tuition rate. Students who score at least a 500 on their MCAT and have a 3.5 overall GPA are eligible. Admitted students with a permanent residency from Texas are eligible for scholarships if requirements are met.

**OSU-COM boasts one of the lowest average student loan debt loads of any medical school in the country.**

## Financial Aid and Scholarships

We understand that pursuing a medical education is a significant investment in time and money. The Office of Financial Aid will assist you in determining your eligibility for federal and institutional financial assistance.

Becoming a DO doesn't have to equate to debt overload and we are here to ensure that we provide you with suggestions for keeping your expenses minimal. If you choose to borrow student loans to cover some or all of your educational expenses, our goal is to provide you with a financial awareness plan for borrowing, budgeting and successful repayment strategies after graduation.

Scholarships are also available for those who apply and qualify. Our generous scholarship donors provide hundreds of thousands of dollars of scholarships to students each year. Federal work-study is also available to offset a portion of educational expenses by providing students who qualify with on-campus employment.



Medical school can be expensive, but there are options available to help finance your education. The OSU-CHS Office of Financial Aid works with all qualified students to help meet the cost of their education through scholarships, federal or private student loans, federal work study, veteran education benefits, military health profession scholarships, or other programs.”

— Teri Cochran, Director of Financial Aid





“

While I was working to earn a Master’s Degree at OSU-CHS, my faculty mentors — Dr. Delores Vazquez-Sanroman and Dr. W. Kyle Simmons — encouraged me to think about pursuing a career in medicine. They provided me with research opportunities that best aligned with my interests. I was able to experience the support and collaboration that was crucial for my academic and professional development. I knew immediately that OSU-COM would be a great fit to provide me with the support and academic rigor that I was looking for. This scholarship will provide me with the financial support to continue to academically flourish without the added stress of finances.”

— **Samuel Alvarado**, Class of 2027  
OSU-COM Tulsa





Schedule a tour of our campuses,  
an advisement appointment or  
register for a recruitment event.

[okla.st/com\\_upcoming](https://okla.st/com_upcoming)



**MEDICINE**

[medicine.okstate.edu](https://medicine.okstate.edu)

The Oklahoma State University Center for Health Sciences prohibits discrimination against qualified individuals based on their age, race, ethnicity, color, religion, sex, sexual orientation, genetic information, gender, gender identity or expression, national origin, disability, protected veteran status, or other protected category with regard to employment, educational programs and activities, and/or admissions. Examples of sexual misconduct and/or sex discrimination include: sexual violence, sexual harassment, sexual assault, domestic and intimate partner violence, stalking, or gender-based discrimination. OSU-CHS encourages any student who thinks that he or she may have been a victim of sexual misconduct or sexual discrimination to immediately report the incident to the Title IX Coordinator (campus contacts below). Students may also report incidents of sexual misconduct or sex discrimination to a faculty or staff member, who is then required by federal law (Title IX) to notify the Title IX or Deputy Title IX Coordinator. If a reporting student would like to keep the details confidential, the student may speak with staff in the Student Counseling Center (918-561-1822) or the University's Victim Advocate (918-200-5218). For more information regarding Title IX violations, please go to: <https://medicine.okstate.edu/hr/tis2many/policies.html>.

This publication, issued by Oklahoma State University Center for Health Sciences as authorized by the Office of External Affairs, was printed by Caye Solutions, PPC at a cost of \$4,738.00 / 2,000 / September 2024.